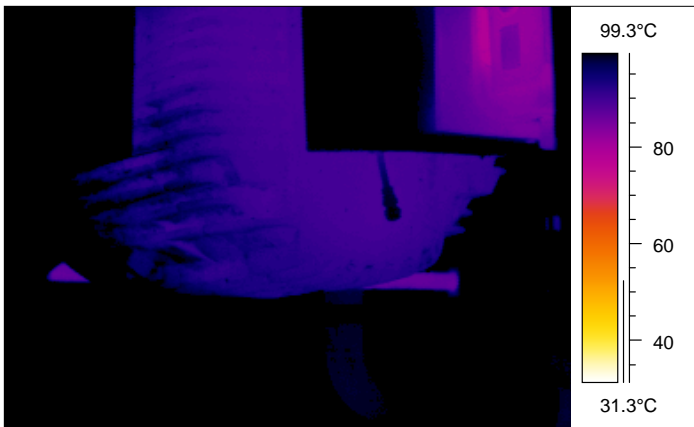


Infrared inspections are a routine inspection in all areas of our plants.

Most believe it is all about what the infrared camera sees, forgetting that there is a human who is one of the most significant and important components of any good Predictive maintenance program, the brains behind the camera. The camera is only as good as the operator, his knowledge and skill manipulating the camera to get the best possible image each and every time is key to excellent report with pertinent information for the department requesting the infrared scans..

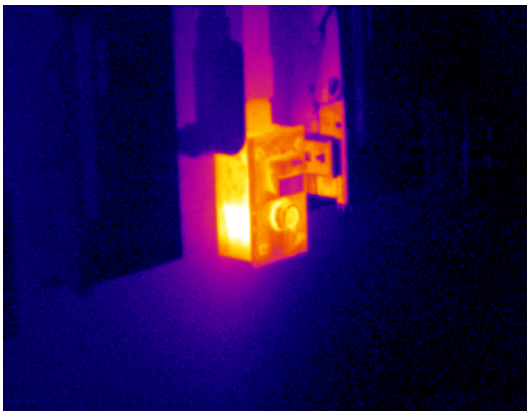
The camera operator also brings other assets into the mix each time he completes an infrared route, he brings his other senses along as well. Nothing can replace this invaluable set of tools, which with the knowledge on how the system works, can assist the local departments immeasurably by giving them a heads up on equipment that may require immediate attention. This is very relevant today with the cutbacks in manpower across industry; a knowledgeable thermographer is another skilled tradesman to be utilized in your maintenance program.

What we have here are some images captured on regular rounds, this is a motor that was running extremely hot, over 100 deg C, it was discovered that all of the motors were running this hot, it was unusual. The thermographer found the source of the problem by just looking around; the end bells for the fans were plugged with grease and dirt. Once cleaned all of the motor's operating temperatures dropped to normal levels of around 40 deg C. See attached.





Other things found on routine rounds were an emergency stop Pushbutton station that was at over 100 deg C, water had entered the box and shorted the leads and melted the pushbutton down. This effectively eliminated the redundant spare pump motor from starting, not to mention the hot steam from burning someone who opened the box to see what the problem was. With the infrared images at hand the electrician opened the box cautiously, when he did steam billowed out of the box, this possibly eliminated a possible burn to the electricians hand.



The other set of eyes will also notice damage like this water damage inside a local disconnect that had several hot connections.



Something always to keep in mind when scanning, stay aware of what is around you could get hints on what is happening and insight into unseen problems.

Regards,

Geoff Generalovic